

Your meeting at Luna

Meetings - Workshops - Lunch



Capacities

With an area of over 200 m², the Luna is suitable for meetings and workshops from 15 to 80 people.

Infrastructure

large screen
easy access via Clickshare

flipcharts
Moderation Caddy

microphone
WLAN

Settings



U - shape



Block shape



theatre



chair circle

Customised settings possible by arrangement.

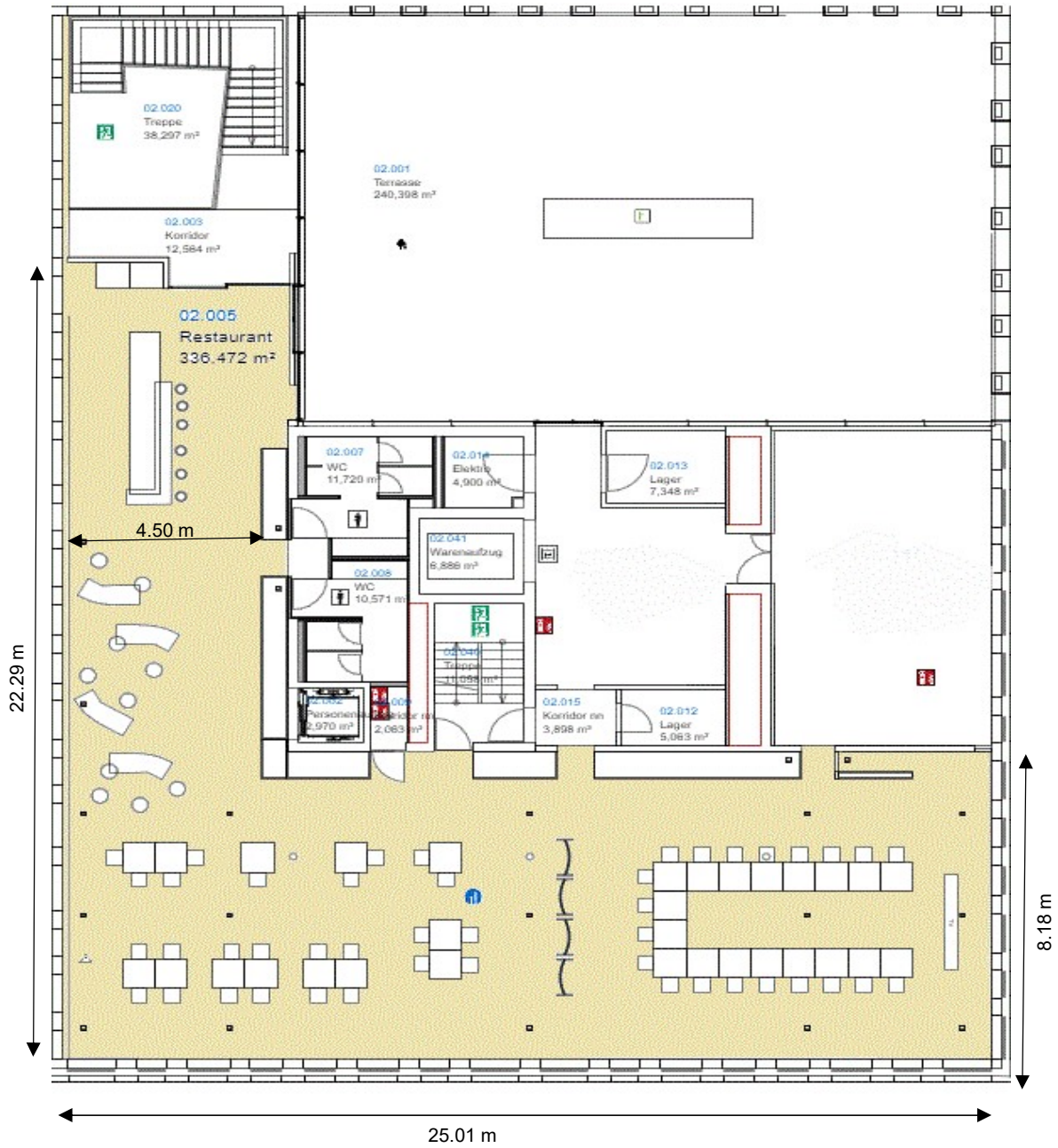
Catering

At Luna you can treat yourself to a modern mezze business lunch
mezze business lunch, consisting of various starters and two different
two different main courses.

You can find the current menus on our website.

During your meeting, coffee breaks, mineral water and hot
and hot drinks are available.

Room plan





Your booking options

Morning without lunch 8 - 12 am 39.00 CHF per person

includes a coffee break with pastries, mineral water and coffee during the meeting
self-service during the meeting, as well as use of the room

Morning with lunch 8 - 12 am 79.00 CHF per person

includes a coffee break with pastries, mineral water and coffee during the meeting
self-service coffee during the meeting, a rich mezze lunch
and use of the room

All-day flat rate 8 am - 5 pm 99.00 CHF per person

includes two coffee breaks with pastries, mineral water and coffee during the meeting
self-service coffee during the meeting, a rich mezze lunch
and use of the room

Afternoon without lunch 1 - 5 pm 39.00 CHF per person

includes a coffee break with pastries, mineral water and coffee during the meeting
self-service during the meeting, as well as use of the room

Afternoon with lunch 12 am - 5 pm 79.00 CHF per person

includes a coffee break with pastries, mineral water and coffee during the meeting
during the meeting, a rich mezze lunch (from 11.30 a.m.) and use of the room,
and use of the room

Minimum number of participants 15 persons.

The Luna can be booked exclusively for groups of 40 or more.

**For short meetings or presentations lasting less than 2 hours,
we will be happy to a customised offer.**